



Earth Science
Standard
E.5.e.



Rainforests and Deserts: Distribution, Uses, and Human Influences

California Education and the Environment Initiative

Approved by the California State Board of Education, 2010

The Education and the Environment Initiative Curriculum is a cooperative endeavor of the following entities:

California Environmental Protection Agency
California Natural Resources Agency
California State Board of Education
California Department of Education
Department of Resources Recycling and Recovery (CalRecycle)

Key Partners:

Special thanks to **Heal the Bay**, sponsor of the EEI law, for their partnership and participation in reviewing portions of the EEI curriculum.

Valuable assistance with maps, photos, videos and design was provided by the **National Geographic Society** under a contract with the State of California.

Office of Education and the Environment

1001 I Street • Sacramento, California 95814 • (916) 341-6769
<http://www.CaliforniaEEI.org>

© Copyright 2011 by the California Environmental Protection Agency
© 2013 Second Edition
All rights reserved.

This publication, or parts thereof, may not be used or reproduced without permission from the Office of Education and the Environment.

These materials may be reproduced by teachers for educational purposes.



Lesson 1 California's Desert Blooms

- 1** Joshua Tree National Park 3
- 2** Barstow-Vegas Wagon Trail 4

Lesson 2 Global Distribution of Rainforests and Deserts

- 3** Life in the Amazon Rainforest 5
- 4** Life in the Mojave Desert 6
- 5** Latitude 7
- 6** Global Convection Currents 8
- 7** Global Distribution of Rainforests 9
- 8** Global Distribution of Deserts 10

Lesson 3 Rainforests' and Deserts' Influence on Humans

- 9** Rainforest Uses 11
- 10** Solar and Wind Power from the Desert 12
- 11** Desert Uses 13

Lesson 4 Human Influences on the Distribution of Rainforests and Deserts

- 12** Human Activities in Rainforests 14
- 13** Border Between Haiti and Dominican Republic 15
- 14** Human Activities in Deserts 16
- 15** World Biomes 17
- 16** Ecosystem Recovery 18
- 17** Global Desertification Vulnerability Map 19

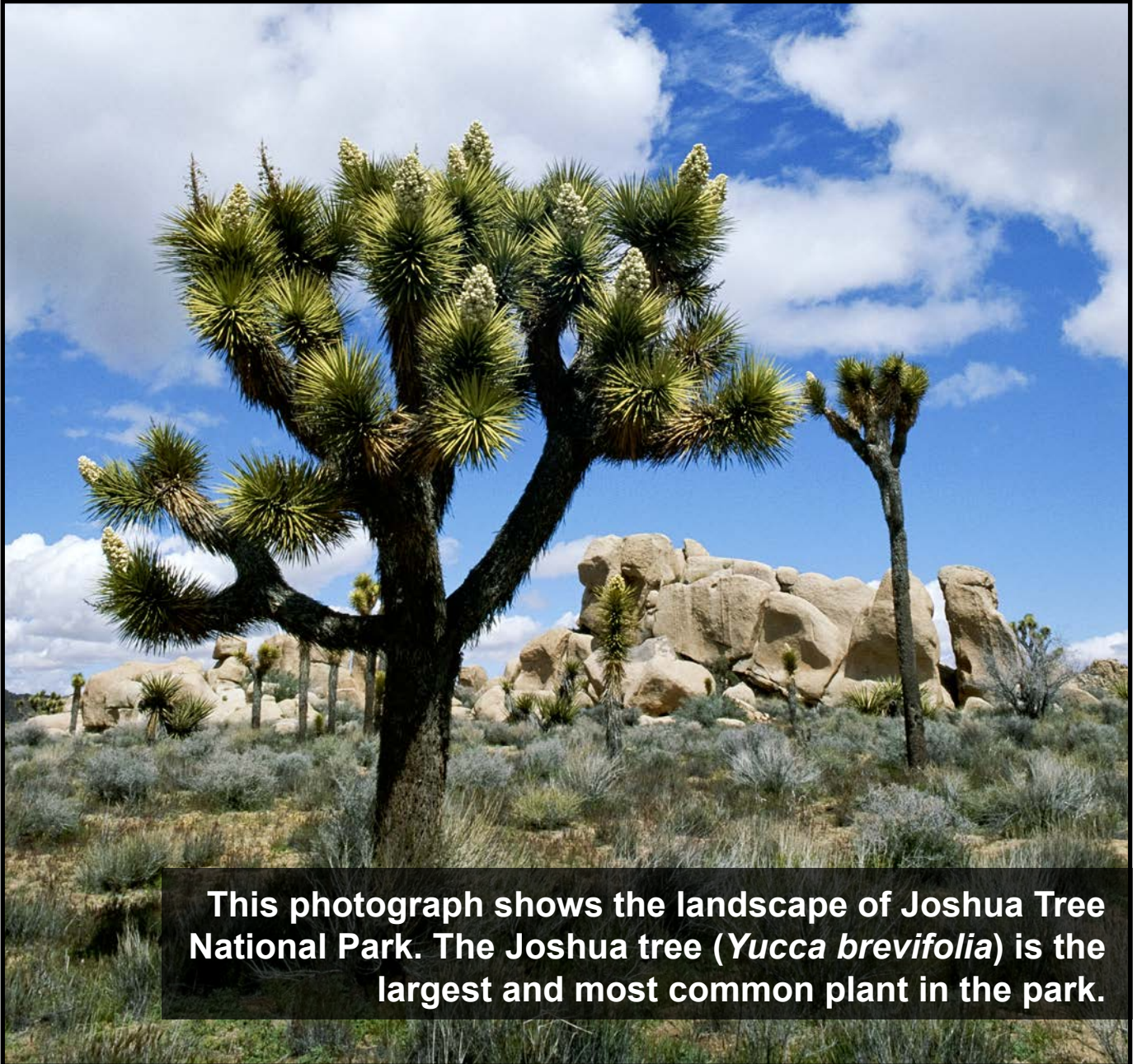
Lesson 5 The Effects of Biome Distribution on Human Cultures

18	Changing Boundaries of the Sahara Desert	20
19	Artifacts of the Kiffian Culture	21
20	Global Temperature Change	22
21	Artifacts of the Tenerian Culture	23

Lesson 6 Science and Decision Making for California's Deserts

22	Mojave Desert Ecosystem	24
23	Who Manages California's Mojave Desert Lands?	25
24	Desert Crusts	26
25	Spatial Map for Soil Compaction Recovery	27

VA #1 Joshua Tree National Park



This photograph shows the landscape of Joshua Tree National Park. The Joshua tree (*Yucca brevifolia*) is the largest and most common plant in the park.

VA #2 Barstow-Vegas Wagon Trail



VA #3 Life in the Amazon Rainforest

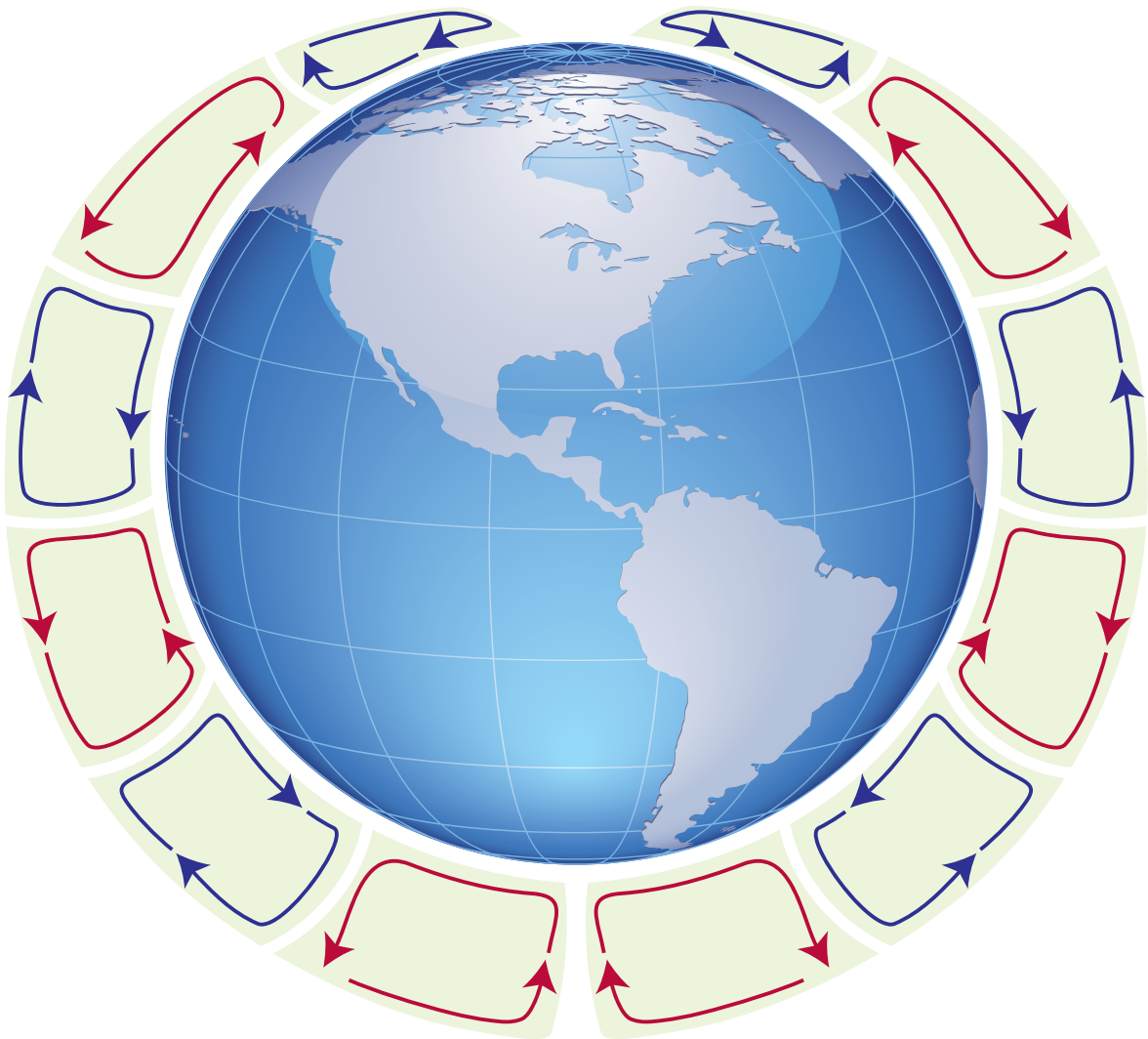


VA #4 Life in the Mojave Desert

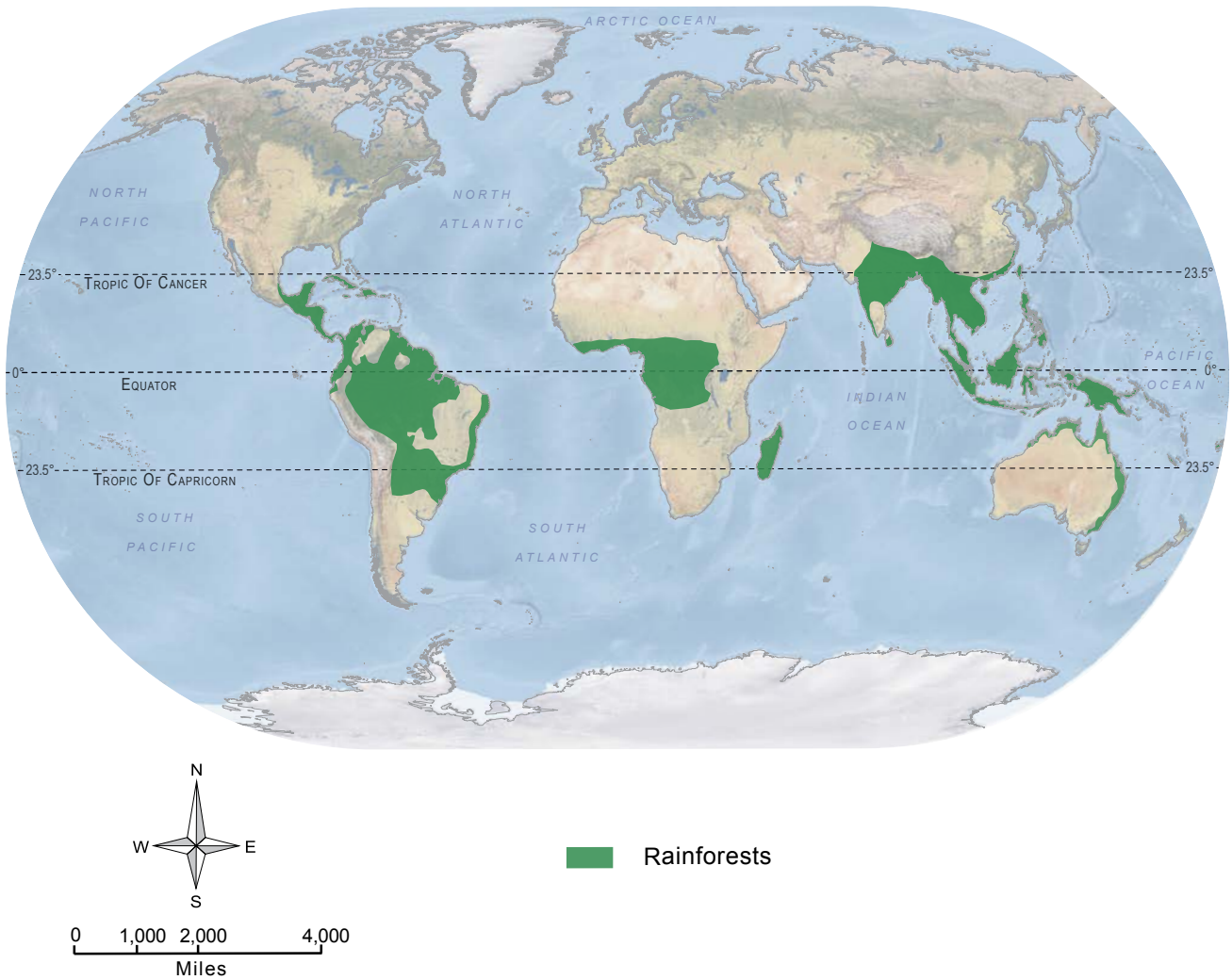


VA #5 Latitude**Latitude**

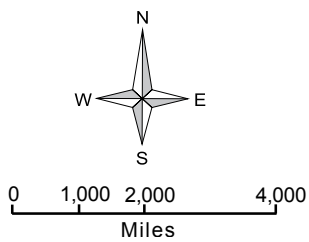
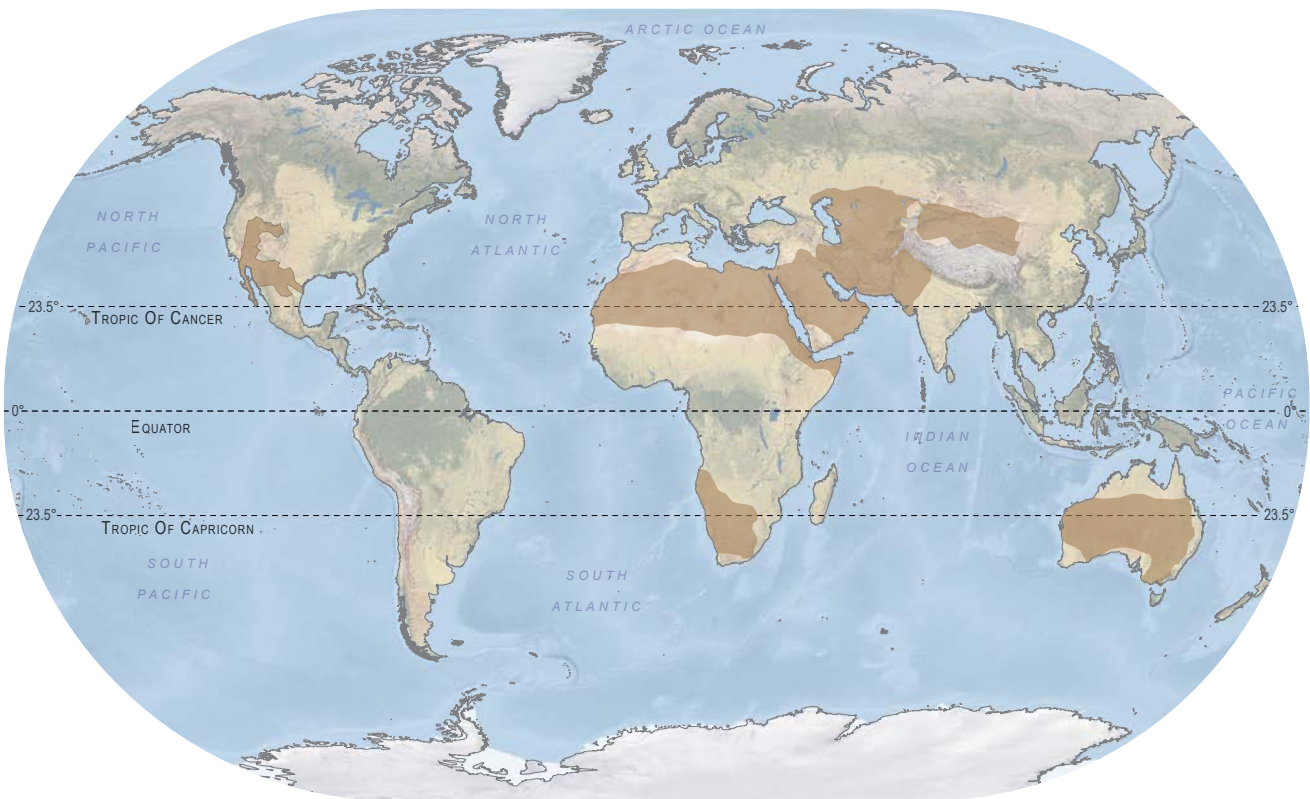
VA #6 Global Convection Currents



VA #7 Global Distribution of Rainforests



VA #8 Global Distribution of Deserts



Deserts

VA #9 Rainforest Uses

Ecosystems Goods (5 points)

Trees

Flowers

Soil

Water

Oxygen

Ecosystems Services (5 points)

Oxygen production

Carbon sequestration (long-term storage of carbon in forests, soil, and oceans)

Erosion control

Nutrient cycling

Regulation of water cycle

Human Uses (5 points)

Timber for construction

Agricultural crop seed sources

Pharmaceutical/medicinal discovery sources

Foodstuffs, including spices, nuts, and berries

Roots of plants keep soil in place and prevent erosion

VA #10 Solar and Wind Power from the Desert



VA #11 Desert Uses

Ecosystems Goods (5 points)

Land

Plants

Animals

Petroleum—crude oil

Minerals, precious metals, and gemstones

Ecosystems Services (5 points)

Atmospheric services (for example heat, wind)

Water supply/storage

Potential for solar and wind power

Erosion control

Pollination by insects

Human Uses (5 points)

Solar and wind energy

Recreation

Food production

Land for farming

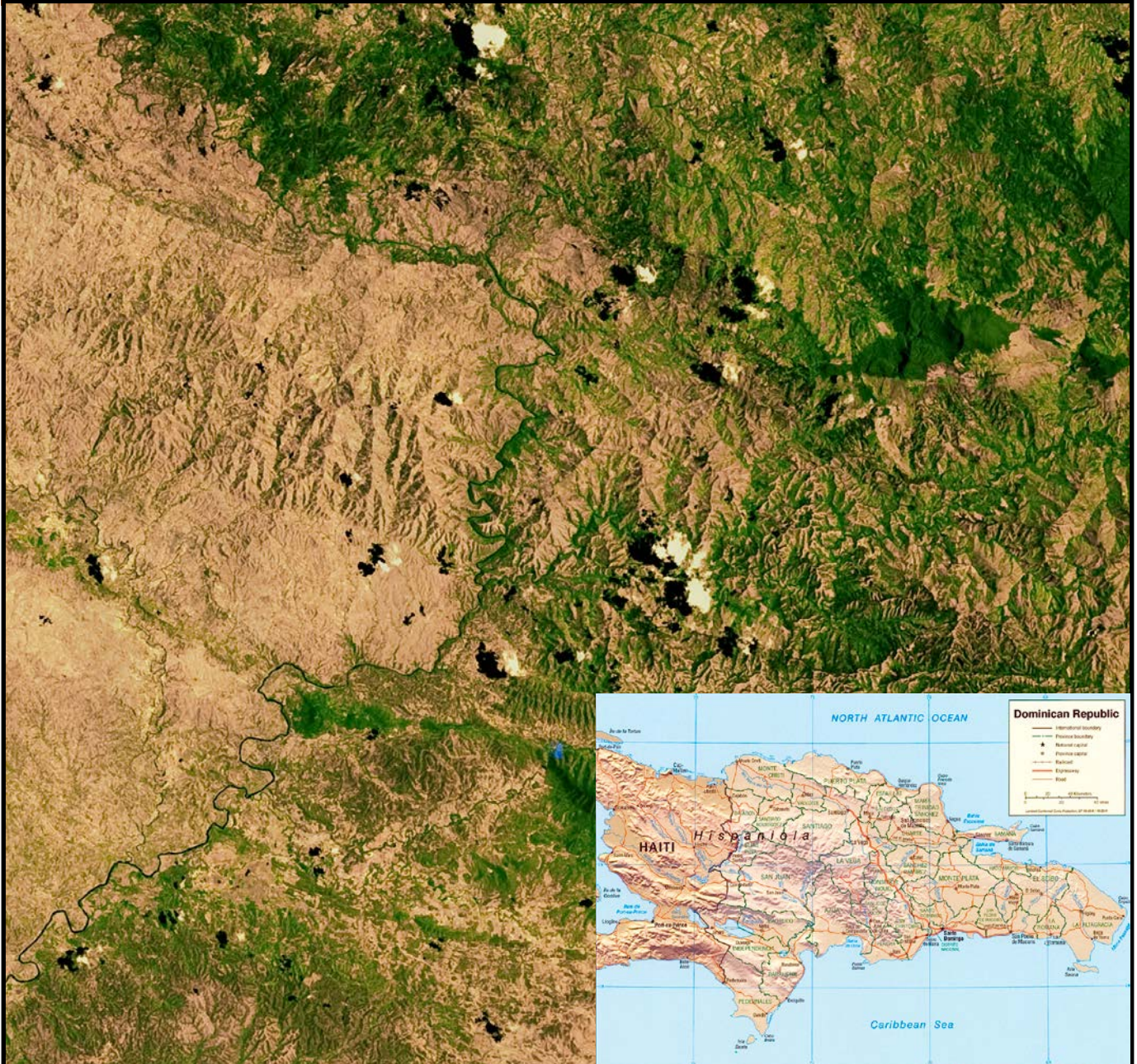
Habitat for plants and animals

Land for development and housing

VA #12 Human Activities in Rainforests



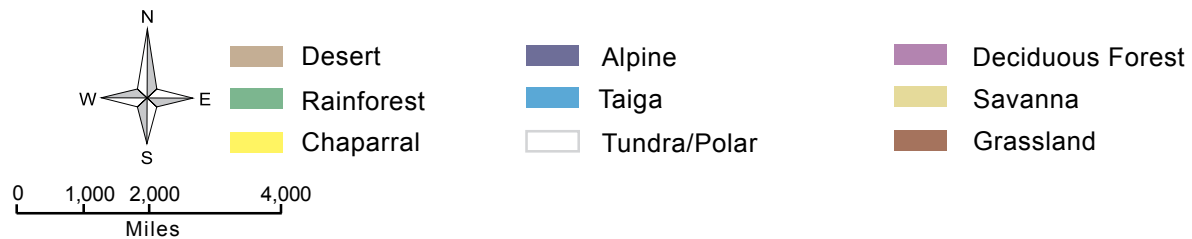
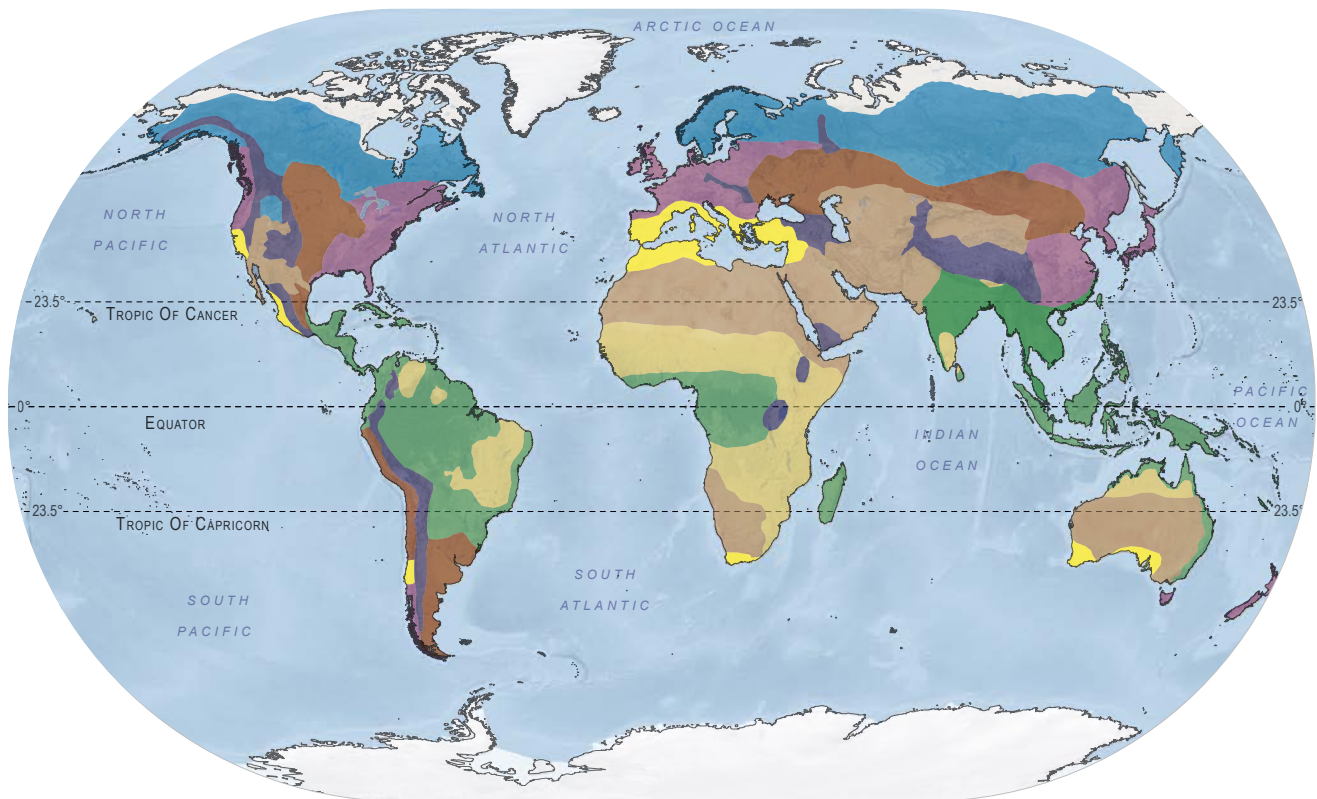
VA #13 Border Between Haiti and Dominican Republic



VA #14 Human Activities in Deserts



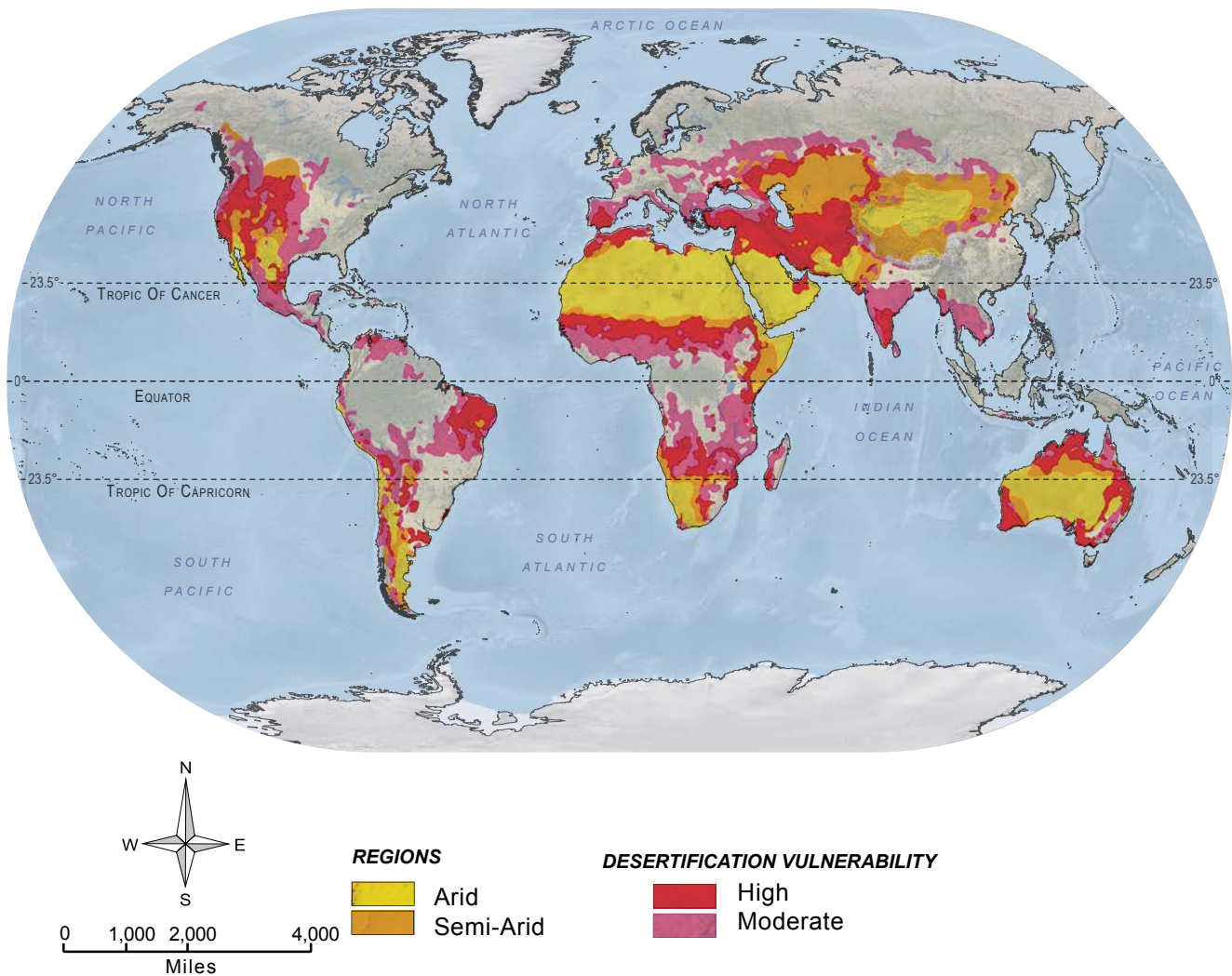
VA #15 World Biomes



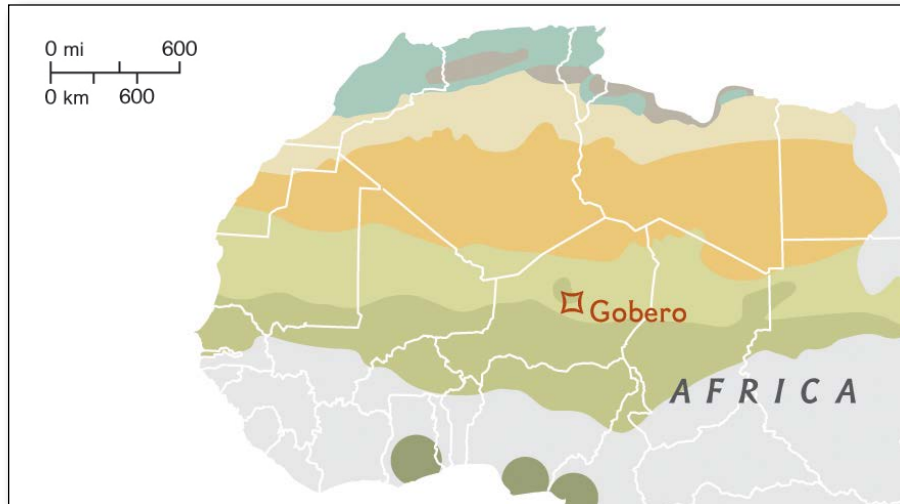
VA #16 Ecosystem Recovery



VA #17 Global Desertification Vulnerability Map



VA #18 Changing Boundaries of the Sahara Desert

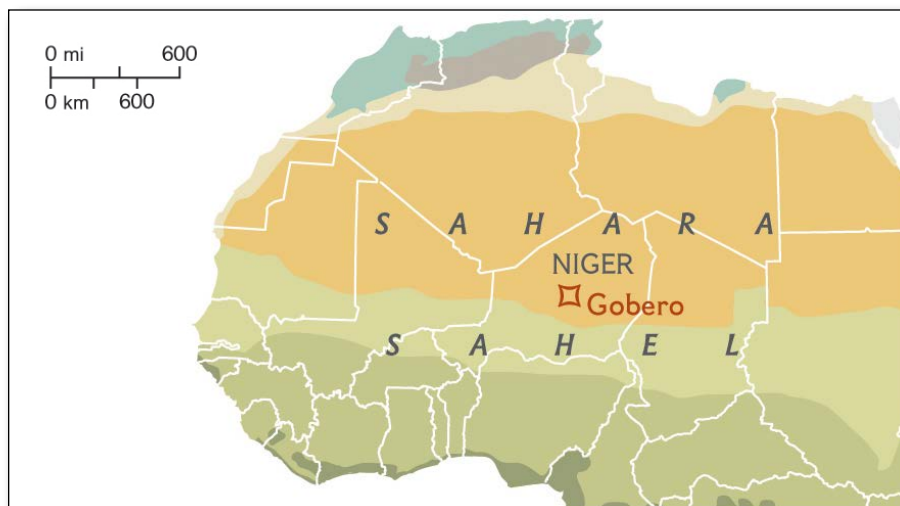


Vegetation

- Forest
- Steppe
- Semidesert
- Desert
- Savanna
- Savanna and forest
- Rain forest
- No data

Sahara 8,000 Years Ago

Gobera – Ancient Burial Site



Sahara Today

Gobera – Ancient Burial Site

VA #19 Artifacts of the Kiffian Culture



fishhook tool



spear tip

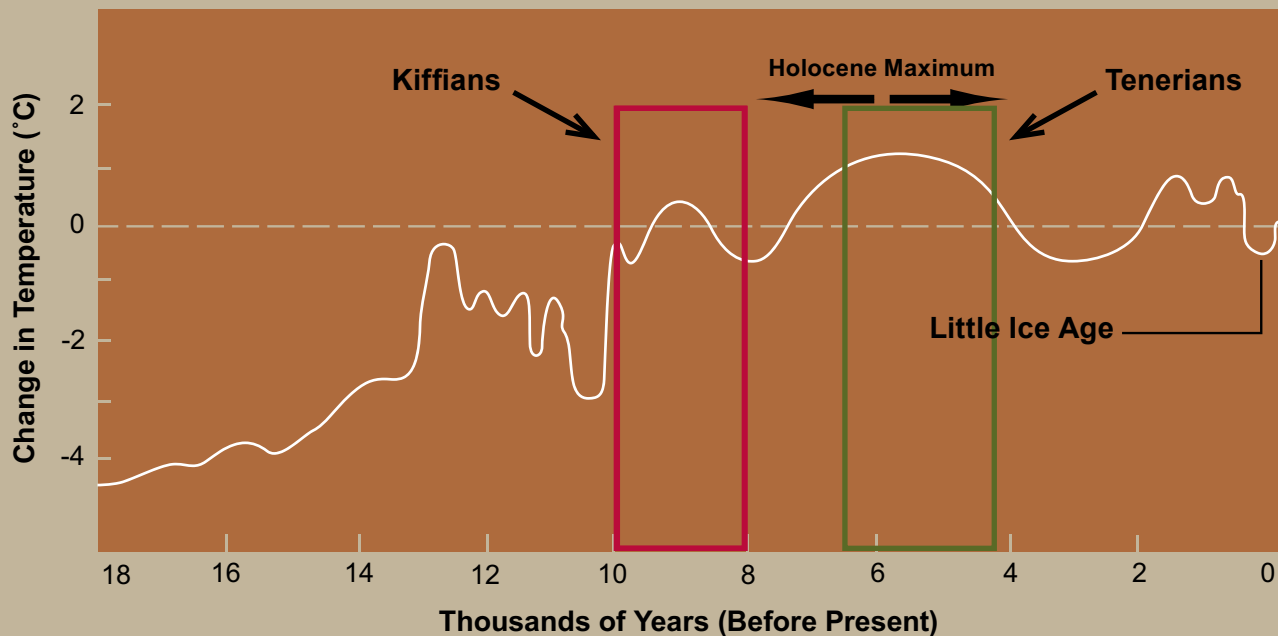


harpoon



harpoon

VA #20 Global Temperature Change



Kiffian Culture lived in Green Sahara



Tenerian Culture lived in Green Sahara

VA #21 Artifacts of the Tenerian Culture



arrowhead



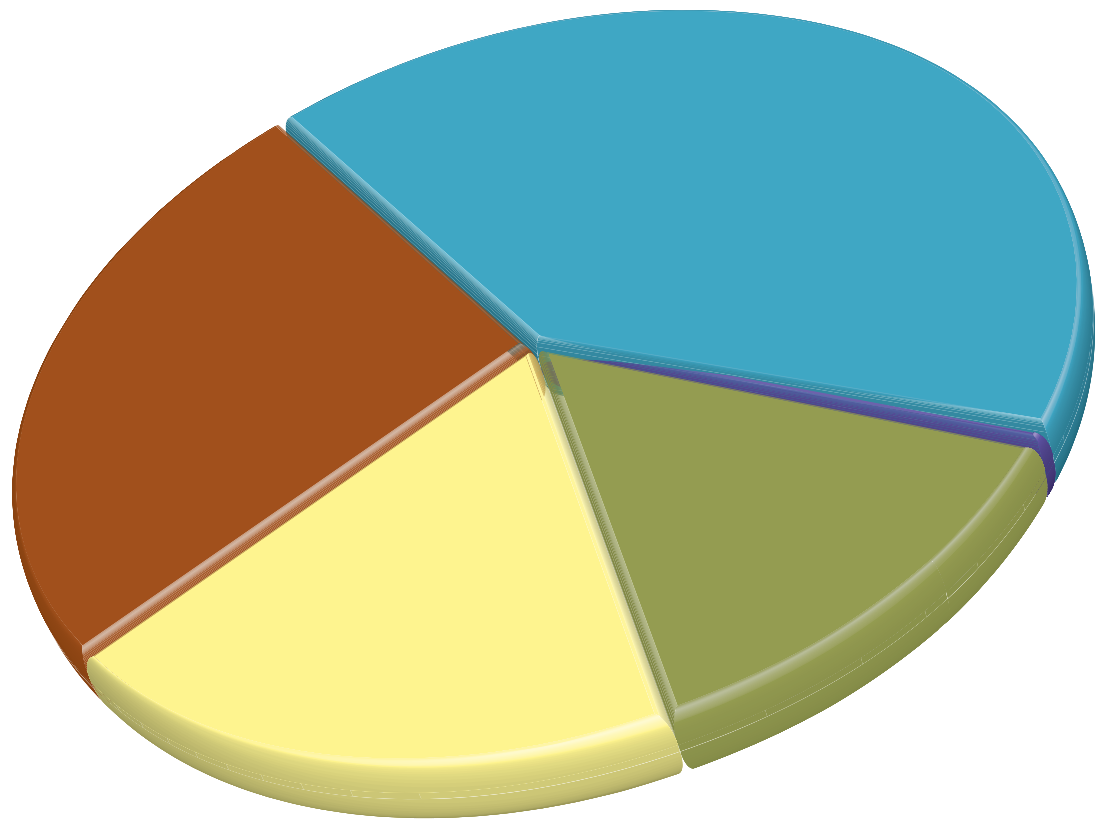
tool from
antelope knuckles








arrowhead

VA #22 Mojave Desert Ecosystem



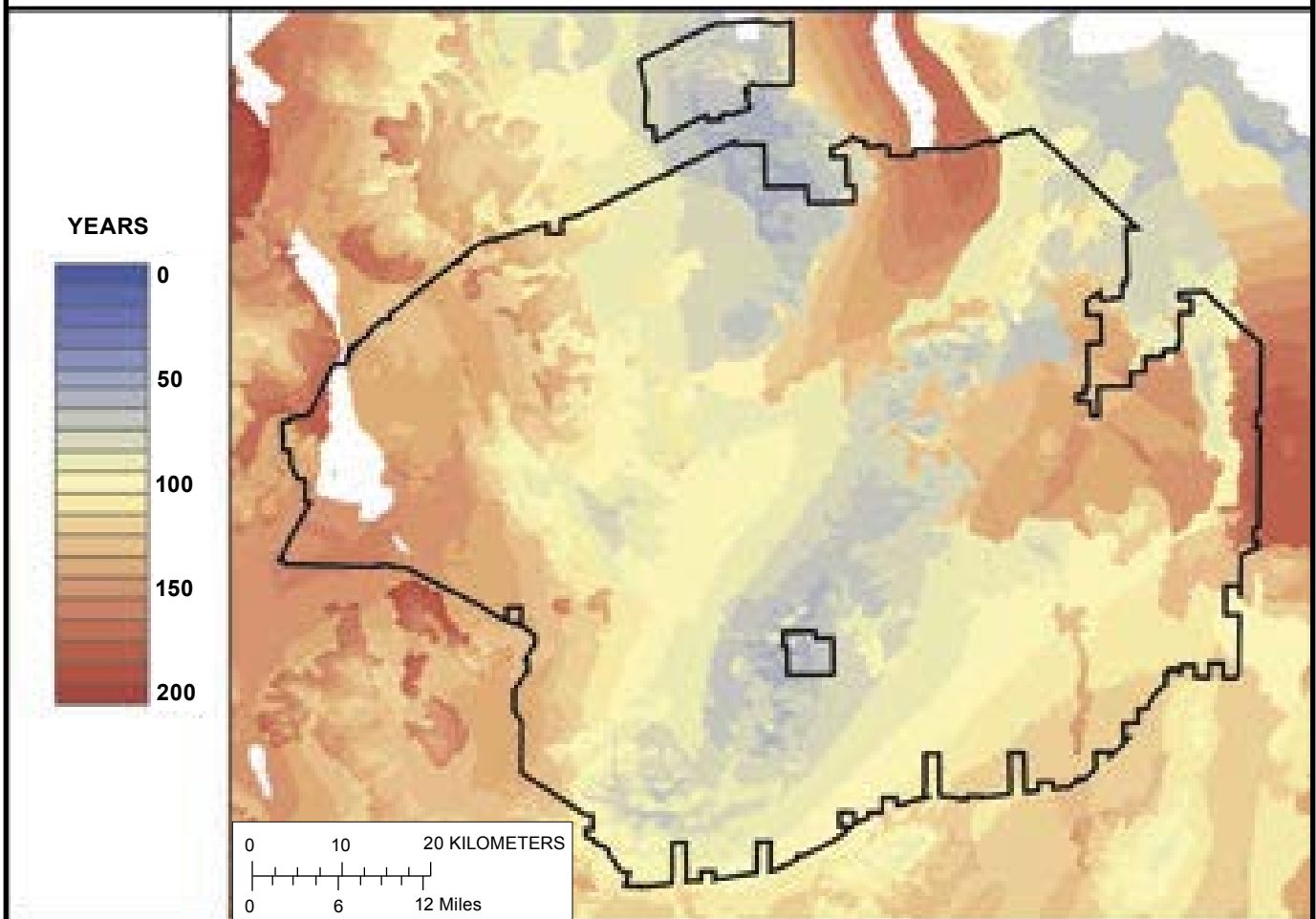
VA #23 Who Manages California's Mojave Desert Lands?

-  Bureau of Land Management
-  National Park Service
-  Private Landowners/Municipalities
-  Department of Defense
-  State Parks/Fish and Game

VA # 24 Desert Crusts



VA #25 Spatial Map for Soil Compaction Recovery



Geospatial map of the USGS Recoverability and Vulnerability of Desert Ecosystems (RVDE) study site in the Mojave Desert shows the time necessary to recover from soil compaction.

Source: Used with permission of the U.S. Geological Survey.



California STATE BOARD OF
EDUCATION

California Education and the Environment Initiative

